

## IMPORTANT:

PLEASE COMPLETELY UNDERSTAND ALL USER INSTRUCTIONS AND SAFETY INFORMATION BEFORE USING THIS PRODUCT. AS WITH ANY HIGH TECH PRODUCT YOU WILL NEED TO ROUTINELY CHECK FOR LOOSE HARDWARE, CRACKS OR OTHER DAMAGE AND REPLACE ITEMS AS NECESSARY. DO NOT USE PRODUCT IF ANY OF THESE CONDITIONS EXIST.

## HARDWARE

### CAGE MOUNTING

M5 x 12mm Socket Head	M5 x 16mm Socket Head	M5 Flat Washer (x2)	M5 Nylon Insert Lock Nut (x2)	M5 Nylon Spacer

### MOUNTING CLAMP

M5 x 8mm Button Head Flange Screw (x2)

### COMPUTER MOUNT

M5 x 25mm Flat Head Screw	M4 x 10mm Button Head Screw (x2)	M3 x 6mm Flat Head Screw (x2)	Screw Post / Screw	Spring

### BOTTLE

M4 x 20mm Flat Head Screw	Dolphin Breather Valve (x2)

### AERO COMPUTER MOUNT

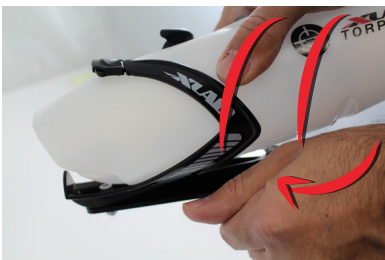
M5 x 16mm Button Head Flange Screw	M5 Fender Washer	M5 Flat Washer	M5 Nylon Insert Lock Nut	M5 External Lock Washer

## MOUNTING TO BIKE

### TOOLS REQUIRED

3mm Hex Wrench  
Torque Wrench up to 35 in lbs (4.0 Nm)

1. Rotate the top of the computer mount all the way forward.
2. Remove the Torpedo Bottle from the cage by holding the mount and twisting the bottle and pulling out.



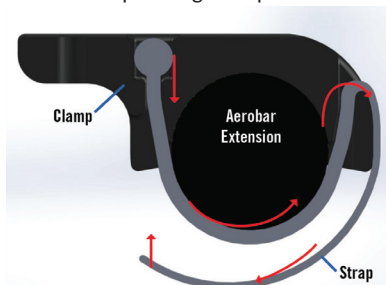
3. Loosen the mounting clamp screws using the 3mm Hex Wrench.



4. Place the mount on the aerobars by pressing each of the mounting clamps onto the extensions. The mounting clamp is designed to expand around the extensions and snap in place. Ensure the clamp is completely touching the extensions.
5. Center the mounting plate and hand tighten each of the screws.



6. Secure the Velcro straps by routing them through the clamps. Pull the straps as tight as possible and attach them in place.



7. Tighten both mounting clamp screws to 35 in lbs (4.0 Nm).

## BOTTLE INSTALL

1. Select the appropriate straw hole. There are two straw holes on either side of the lid for a more forward or rearward straw position. The plug will go in the opposite hole of the straw and is pre-inserted in the rear straw hole. To switch, push the plug in from the top and remove from the bottle. Insert the plug in the new hole by pushing up from inside the bottle to seat it.



2. Trim the straw to the appropriate length for your use. Cut at an angle to make it easier to install.
3. Insert the straw by pinching the end and pushing through the appropriate hole. If using the solid lid, make sure the straw goes through the tether hole in the lid.
4. At the bottom of the Torpedo bottle, there is a groove. Place the straw in front of the groove to have the straw sit more horizontal; place the straw behind to make the straw more vertical.



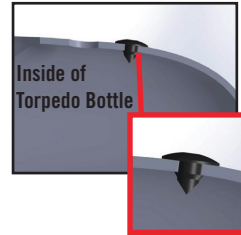
5. Place the bottle in the cage by rotating the bottle and pushing in. Once the bottle is inserted, rotate the bottle back so the rear cage screw locks the bottle in place. Make sure the rear tab of the cage slides into the rear bottle recess.



6. The pre-installed Dolphin Tail can be used to tuck the straw underneath to keep it out of the way while riding.



7. There are two Dolphin Breather Valves included with the system. Install one in the front hole on the top of the bottle by placing the pointed end of the valve in the hole and pressing until it is fully seated. Move the valve around as it is being pushed in to help get the edges in place.



## ADJUST VERSA COMPUTER

### TOOLS REQUIRED

3mm Hex Wrench

Torque Wrench up to 25 in lbs (2.8 Nm)

1. Loosen the side screw at the base of the mount.



2. Adjust the computer mount to the correct height by moving the post. The top can then be rotated to the preferred angle.



3. Tighten the side screw to lock in place and torque to 25 in lbs (2.8 Nm). The screw must be fully tightened for the computer mount to stay in place.

4. Attach the computer and rotate as needed.



## FOR GARMIN MULTISPORT WATCHES

### TOOLS REQUIRED

2mm Hex Wrench  
Torque Wrench up to 10 in lbs (1.1 Nm)

1. Remove the two screws at the top of the computer mount using the 2mm Hex Wrench.



2. Rotate the holder 90 degrees.



3. Reinsert the screws and tighten.
4. Torque both screws to 10 in lbs (1.1 Nm)

## IF USING THE AERO COMPUTER MOUNT

The XLAB Aero Computer Mount is designed to work with most computers and can be used in place of the Versa Computer Mount.

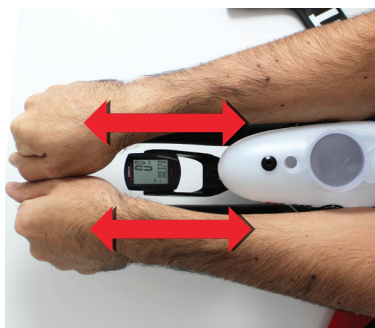
### TOOLS REQUIRED

2.5mm Hex Wrench  
3mm Hex Wrench  
8mm Open Ended Wrench  
Torque Wrench up to 35 in lbs (4.0 Nm)

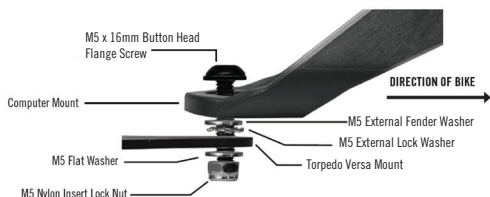
1. Remove the Versa Computer Mount by removing the two M4 Button Head screws at the front of the Torpedo Versa Mounting Plate using the 2.5mm Hex Wrench.



4. Adjust the position of the computer mount so the computer sits just behind the rider's wrist by sliding it forward or backwards.



2. The Aero Computer Mount uses the larger center hole at the front of the Torpedo Versa Mounting Plate.
3. Place the M5 x 16mm screw through the Aero Computer Mount, through the M5 Fender Washer, through the M5 External Lock Washer, through the Versa Mounting Plate, through the M5 Flat Washer, and into the M5 Nylon Insert Lock Nut.



5. While holding the Lock Nut in place with the 8mm Open Ended Wrench, torque the screw to 35 in lbs (4.0 Nm).

## WARRANTY

**Versa Aluminum Mounting Plate** - 2 Year  
**Vee Cage** - 1 Year  
**Torpedo Computer Mount** - Limited 2 Year  
**Torpedo Bottle** - Limited 2 Year  
**All Other Parts** - Limited 6 Month

## BOTTLE CARE

**HAND WASH YOUR TORPEDO BOTTLE, STRAW, PLUG, BITE VALVE, AND LID EVERY TIME YOU USE IT AND BEFORE INITIAL FIRST USE.**

When cleaning by hand it is not necessary to remove the accessories.

1. Fill Torpedo Bottle with soapy water.
3. Use one hand to cover the holes on top of the bottle.
4. Shake bottle vigorously.
5. Rinse and repeat.

## STRAW CARE

Hand wash straw in lukewarm water only. Use a long thin brush to clean tube. Hot water or the dishwasher will damage straw material.